

ERSATZTEILLISTE FÜR

TRAILED TOPPERS

8FTGDW-HD

+ 9FTGDW-HD

+ 12FTGDW-HD



Mehr als grüne Technik.



Kontakt und Ersatzteilbestellung:

Krengel Landtechnik GmbH & Co. KG

Tel.: 02933 97 92 - 0

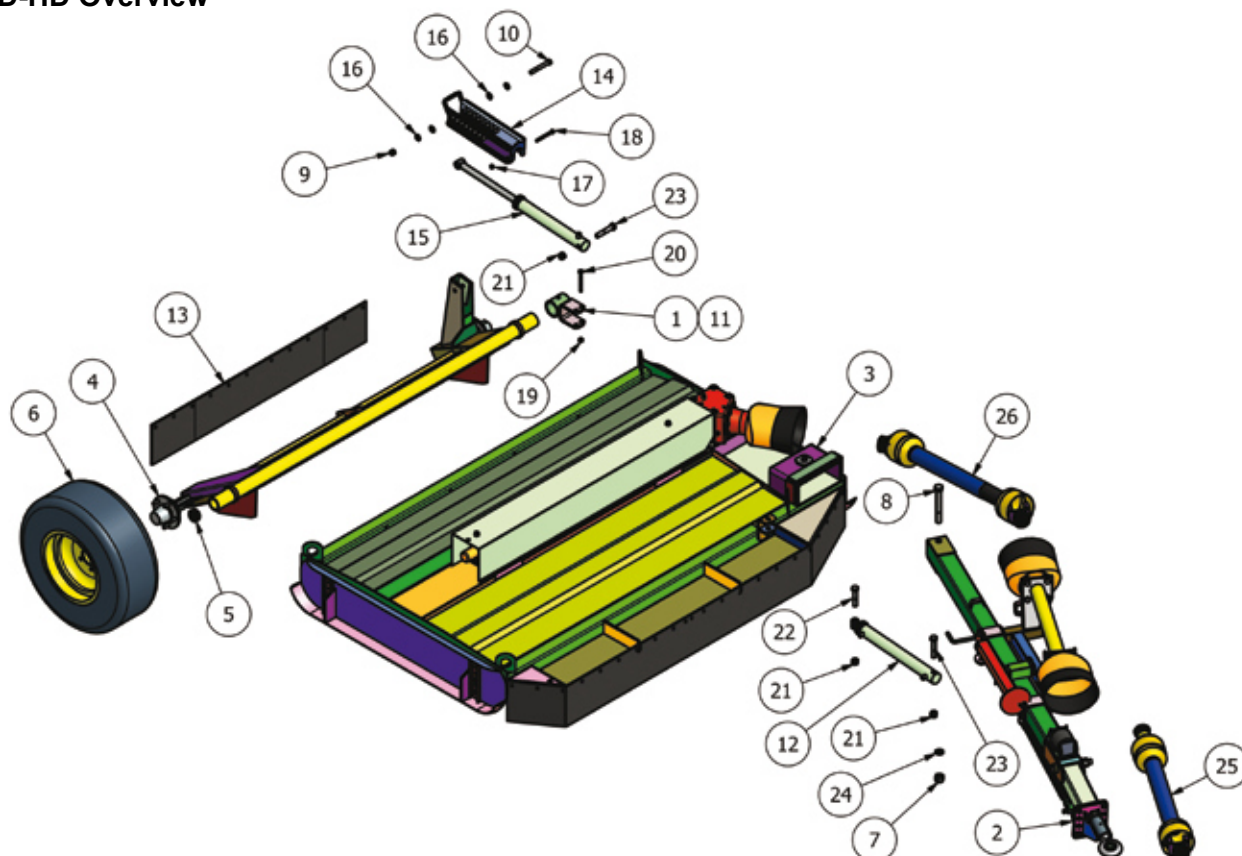
Email: info@krengel.de

Fax: 02933 97 92 - 22

Spare Parts

8FTGD-HD, 9FTGD-HD and 12FTGDW Trailed Toppers

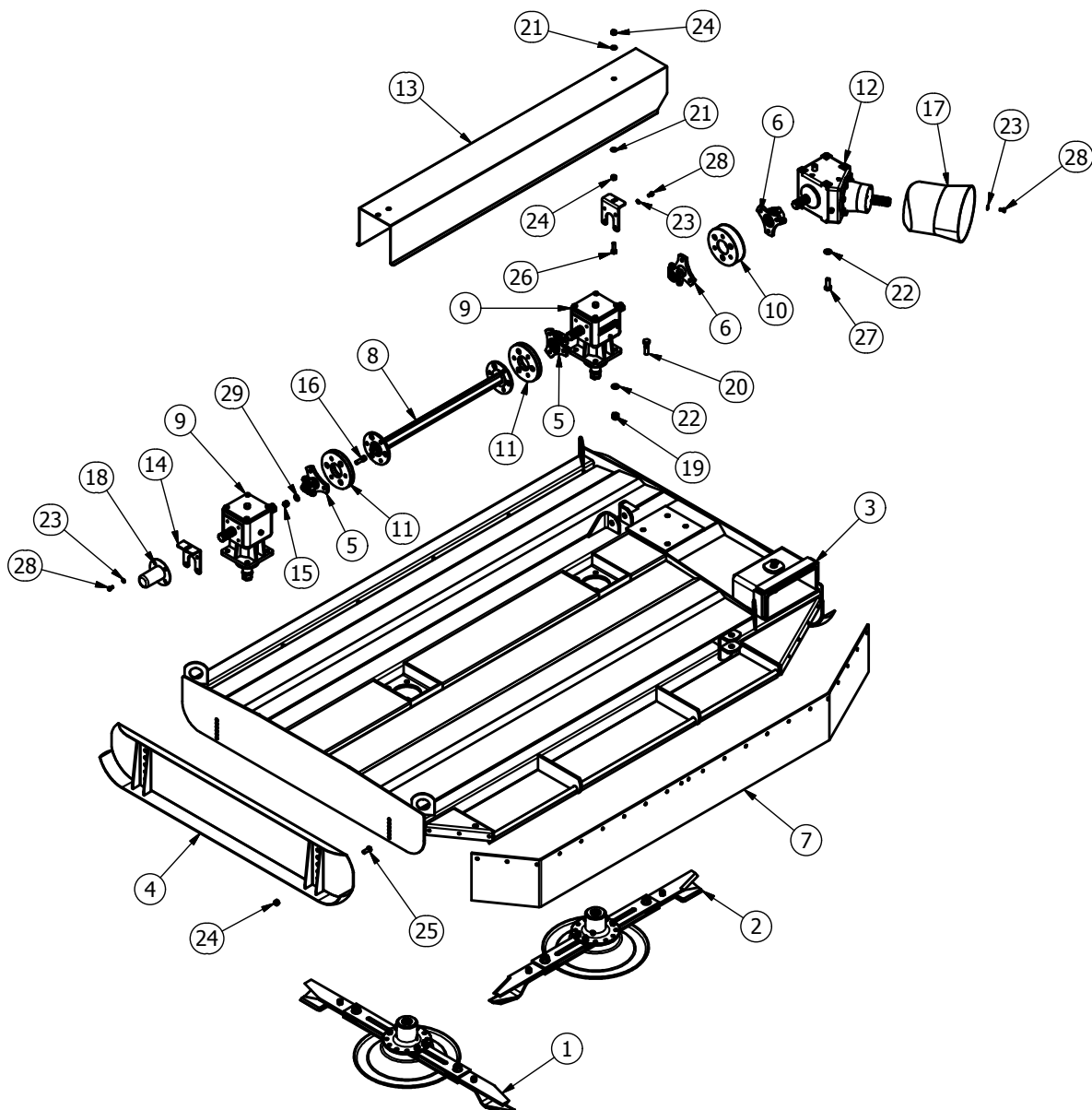
8FTGD-HD Overview



Item	Part No	Description	Qty
1	8T12	AXLE CLAMP	2
2	8TD-GA	8/9 TRAILED DRAWBAR	1
3	8TGTB-GA	800T BODY ASSEMBLY	1
4	9TGTA-1	TRAILED AXLE FAB	1
5	199269	DIA 57.5-61.5mm INSERT	2
6	10X153WH	WHEEL DIA 760x274mm	2
7	1/F	1" NYLOC NUT	3
8	1x8FBZP	1"x8" FINE BOLT	1
9	5/8F	5/8" FINE NYLOC NUT	1
10	58x5FBZP	5/8"x5" FINE BOLT	1
11	820	GREASE NIPPLE 1/8" STR	2
12	8TD-RAM_B	DRAWBAR RAM BODY	1
13	9TSKR	900T SKIRT	1

14	9TGT-AP1	TOPPER HEIGHT SET	1
15	9TGTA-R1N	AXLE RAM BODY	1
16	DSW16	DISC SPRING 34x16.3x2.0	4
17	M10	M10 NYLOC NUT	2
18	M10x110BZP	M10x110 BOLT	2
19	M12	M12 NYLOC NUT	4
20	M12x120BZP	M12x120 BOLT	4
21	M20	M20 NYLOC NUT	3
22	M20x100BZP	M20x100 BOLT	1
23	M20x110BZP	M20x110 BOLT	2
24	SW1	1" SPRING WASHER	1
25	T600810ENC12RB2	T60 SHEAR BOLT O/R	1
26	V600860ENC12C12	COLLAR-COLLAR PTO	1

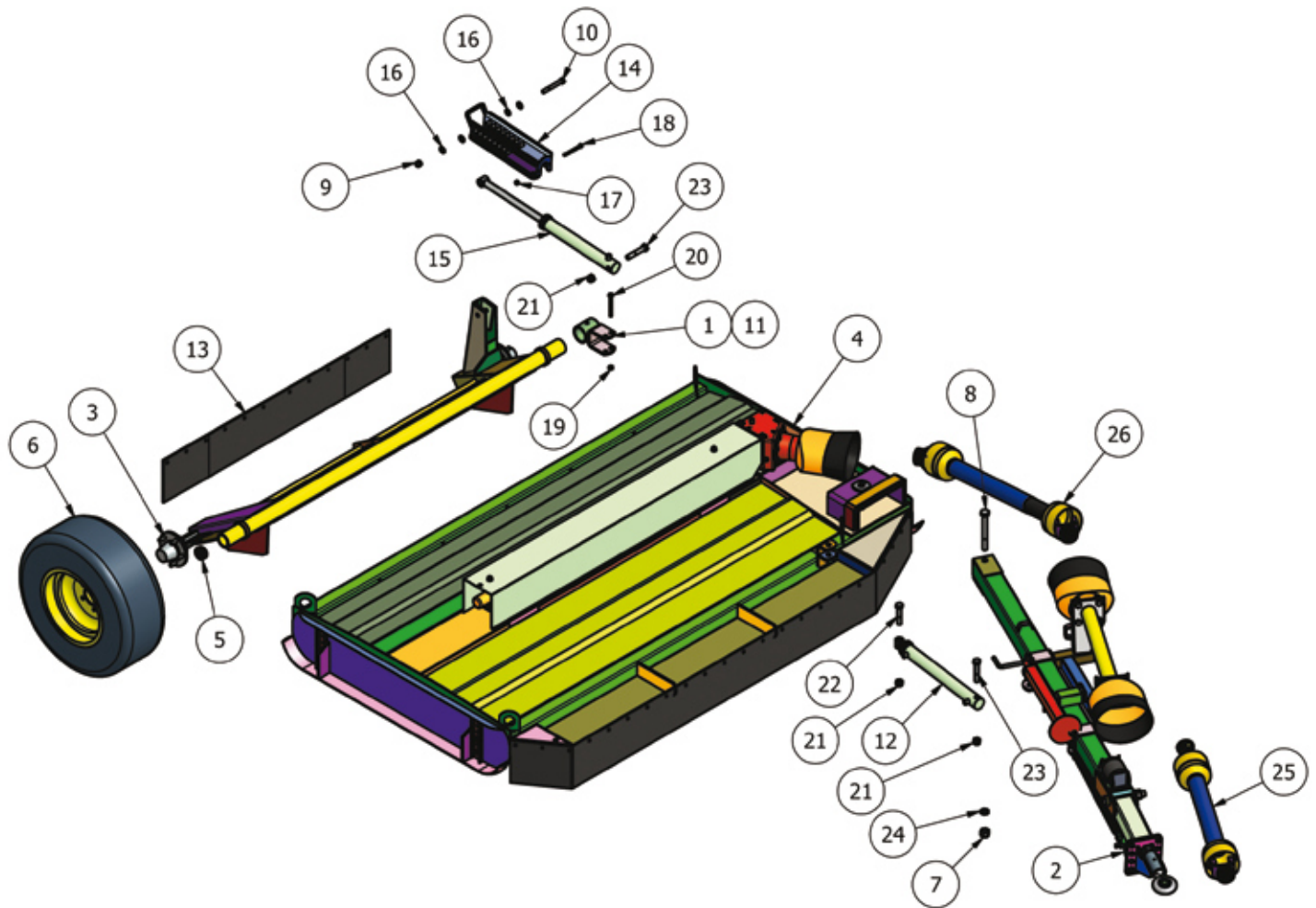
8FTGD-HD Body



Item	Part No	Description	Qty
1	1239V2-D-BL	1239 BLADE (Anti_Clk)	1
2	1239V2-D-BR	1239 BLADE (Clk)	1
3	8TGTB-001	800T BODY FAB	1
4	SLH16AS	SKID (OFFSET)	2
5	60CSD	60mm STAR DRIVE	2
6	8SM-18	6 SPLINE STAR DRIVE	2
7	8SM-30	800SM SKIRT	1
8	DRV-RC-800T	800T DRIVE	1
9	MJ40T (347801)	6 SPLINE 'T' BOX RATIO 1.47	2
10	MJRC-113	113 PCD RUBBER COUPLING	1
11	MJRC-23	113 PCD COUPLING 4mm PLT	2
12	T291005	6 SPLINE 'ANG' RATIO 1.35	1
13	8TGTC-3	800T GEARBOX COVER	1
14	9TGT-CB	GEARBOX COVER BRKT	2
15	12HEX109	1/2F HEX 10.9	18

16	12x112FSKS	1/2"x1 1/2" FINE SOCKET HEAD 12.9	18
17	190.000.545	PTO GUARD (EXTENDED OVAL)	1
18	190592	PTO HAT	1
19	5/8F	5/8" FINE NYLOC NUT	8
20	58x214FBZP	5/8"x2 1/4" FINE BOLT	8
21	FWM12	M12 FLAT WASHER	4
22	FWM16	M16 FLAT WASHER	12
23	FWM8	M8 FLAT WASHER	8
24	M12	M12 NYLOC NUT	12
25	M12x30SZP	M12x30 SET BOLT	8
26	M12x40SZP	M12x40 SET BOLT	2
27	M16x40SZP	M16x40 SET BOLT	4
28	M8x16SZP	M8x16 SET BOLT	8
29	NL12SP	M12 SP NORDLOCK	18

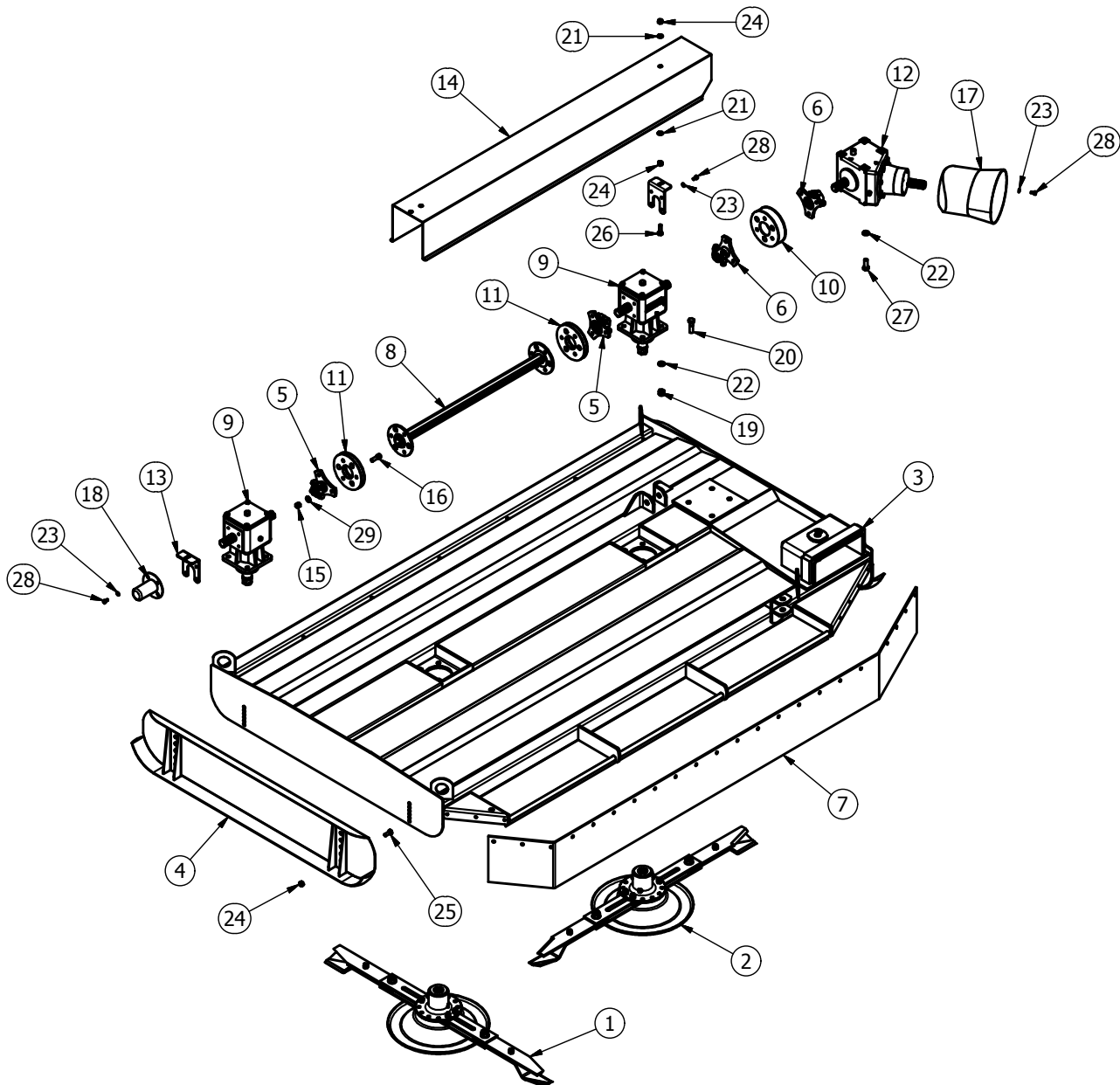
9FTGD-HD Grass Topper Overview



Item	Part No	Description	Qty
1	8T12	AXLE CLAMP	2
2	8TD-GA	8/9 TRAILED DRAWBAR	1
3	9TGTA-1	TRAILED AXLE FAB	1
4	9TGTB-GA	900T BODY ASSEMBLY	1
5	199269	DIA 57.5-61.5mm INSERT	2
6	10X153WH	WHEEL DIA 760x274mm	2
7	1/F	1" FINE NYLOC NUT	1
8	1x8FBZP	1"x8" FINE BOLT	1
9	5/8F	5/8" FINE NYLOC NUT	1
10	58x5FBZP	5/8"x5" FINE BOLT	1
11	820	GREASE NIPPLE 1/8" STR	2
12	8TD-RAM_B	DRAWBAR RAM BODY	1
13	9TSKR	900T SKIRT	1

14	9TGT-AP1	TOPPER HEIGHT SET	1
15	9TGTA-R1N	AXLE RAM BODY	1
16	DSW16	DISC SPRING 34x16.3x2.0	4
17	M10	M10 NYLOC NUT	2
18	M10x110BZP	M10x110 BOLT	2
19	M12	M12 NYLOC NUT	4
20	M12x120BZP	M12x120 BOLT	4
21	M20	M20 NYLOC NUT	3
22	M20x100BZP	M20x100 BOLT	1
23	M20x110BZP	M20x110 BOLT	2
24	SW1	1" SPRING WASHER	1
25	T600810ENC12RB2	T60 SHEAR BOLT O/R	1
26	V600860ENC12C12	COLLAR-COLLAR PTO	1

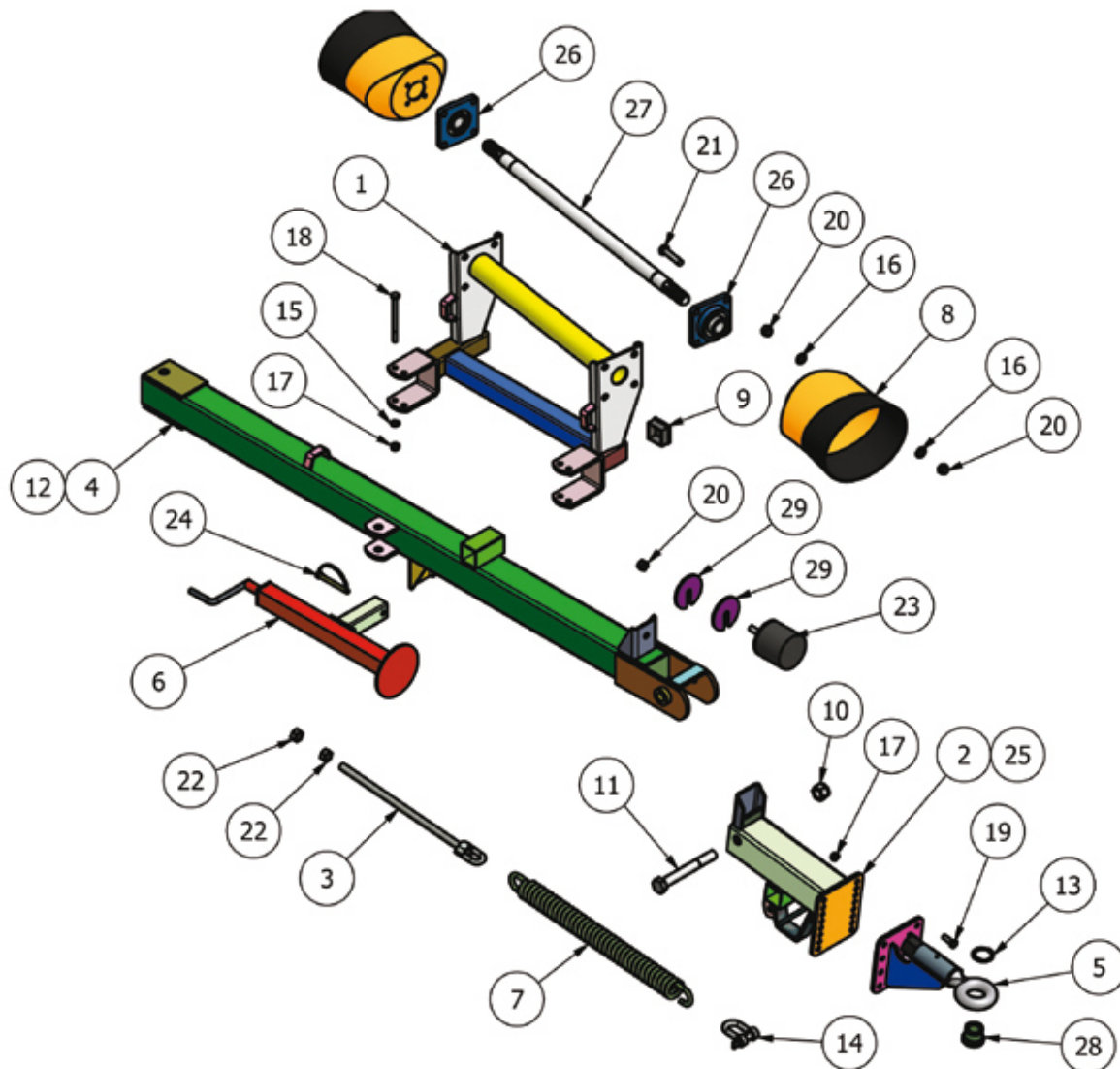
9FTGD-HD Body Assembly



Item	Part No	Description	Qty
1	1385V3-D-BL	1385 BLADE (Anti_Clk)	1
2	1385V3-D-BR	1385 BLADE (Clk)	1
3	9TGTB-01	900T BODY FAB	1
4	SLH16AS	SKID (OFFSET)	2
5	60CSD	60mm STAR DRIVE	2
6	8SM-18	6 SPLINE STAR DRIVE	2
7	9T-SKF	900T SKIRT	1
8	DRV-RC-900T	900T DRIVE	1
9	MJ40T (347801)	6 SPLINE 'T' BOX RATIO 1.47	2
10	MJRC-113	113 PCD RUBBER COUPLING	1
11	MJRC-23	113 PCD COUPLING 4mm PLT	2
12	T291005	6 SPLINE 'ANG' RATIO 1.35	1
13	9TGT-CB	GEARBOX COVER BRKT	2
14	9TGTC-3	900T GEARBOX COVER	1

15	12HEX109	1/2F HEX 10.9	18
16	12x112FSKS	1/2"x1 1/2" FINE SOCKET HEAD 12.9	18
17	190.000.545	PTO GUARD (EXTENDED OVAL)	1
18	190592	PTO HAT	1
19	5/8F	5/8" FINE NYLOC NUT	8
20	58x214FBZP	5/8"x2 1/4" FINE BOLT	8
21	FWM12	M12 FLAT WASHER	4
22	FWM16	M16 FLAT WASHER	12
23	FWM8	M8 FLAT WASHER	8
24	M12	M12 NYLOC NUT	12
25	M12x30SZP	M12x30 SET BOLT	8
26	M12x40SZP	M12x40 SET BOLT	2
27	M16x40SZP	M16x40 SET BOLT	4
28	M8x16SZP	M8x16 SET BOLT	8
29	NL12SP	M12 SP NORDLOCK	18

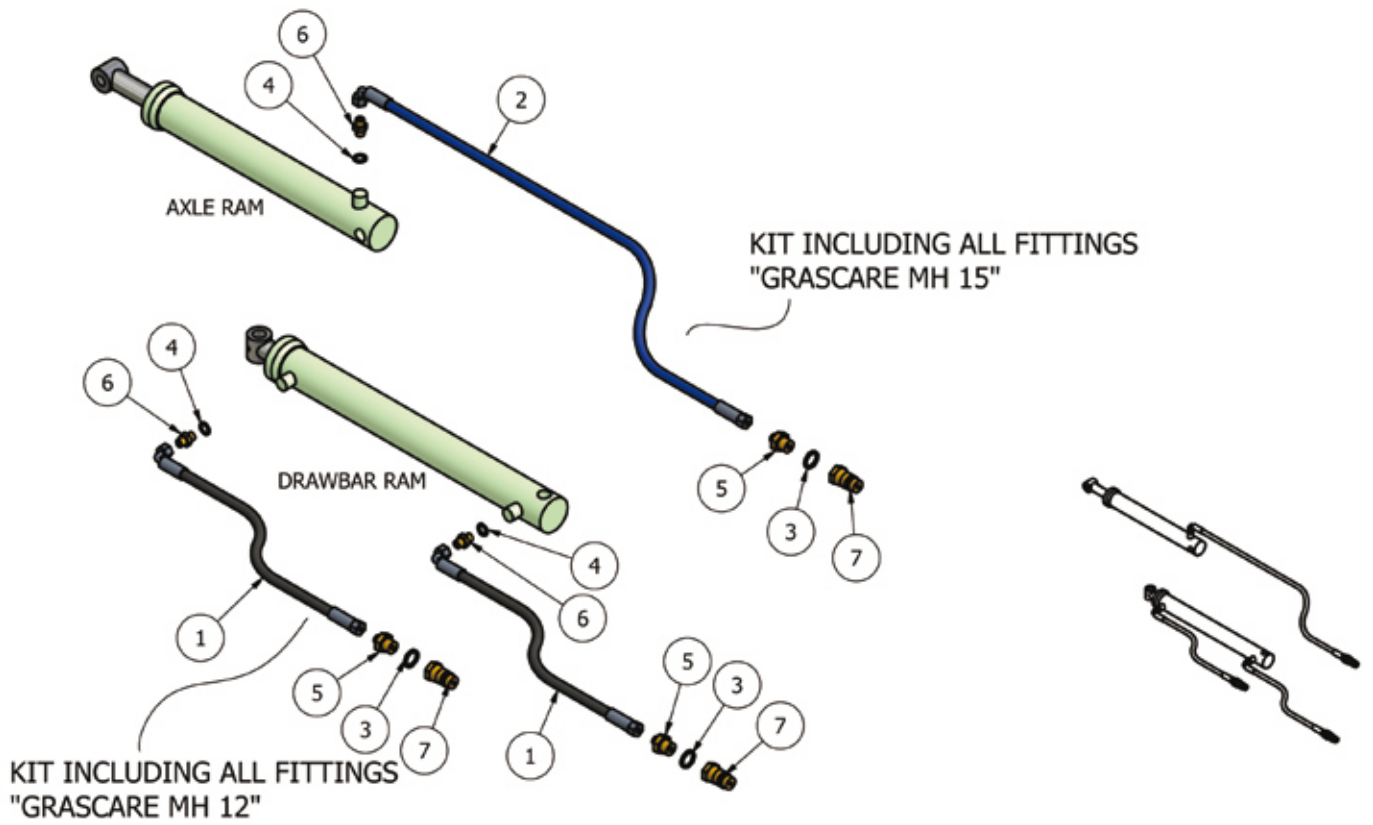
8FTGD-HD and 9FTGD-HD Drawbar



Item	Part No	Description	Qty
1	894T	DUMMY SHAFT MOUNT	1
2	8T-AD1	DRAWBAR HINGE	1
3	8T20	SPRING TENSIONER	1
4	8T3	DRAWBAR FAB	1
5	RTE-01	ROTARY HITCH EYE	1
6	TT-JACK	TOPPER JACK	1
7	12MB2S	DRAWBAR SPRING	1
8	190.000.545	PTO GUARD (EXTENDED OVAL)	2
9	199211	SQ 52-54mm INSERT (POL)	2
10	1F	1" FINE NYLOC NUT	1
11	1x8FBZP	1"x8" FINE BOLT	1
12	820	GREASE NIPPLE 1/8" STR	1
13	AGC2	DIA 50 EXT HEAVY CIRCLIP	1
14	EW29A	5/8" "D" SHACKLE	1
15	FWM12	M12 FLAT WASHER	4

16	FWM16	M16 FLAT WASHER	16
17	M12	M12 NYLOC NUT	12
18	M12x150BZP	M12x150 BOLT	4
19	M12x35BZP	M12x35 BOLT	8
20	M16	M16 NYLOC NUT	17
21	M16x70SZP	M16x70 SET BOLT	8
22	M20HEX	M20 PLAIN NUT	2
23	MOT10	DIA 105x100 BUFFER	1
24	S272	SHAFT LOCK PIN DIA 11	1
25	S840	GREASE NIPPLE 1/8"x45	1
26	SF1-12	DIA 1 1/2" FLANGE BRG	2
27	8T1-3	DUMMY SHAFT	1
28	TDD-TEB	TOE EYE BUSH	1
29	8T19	BUFFER SPACER	2

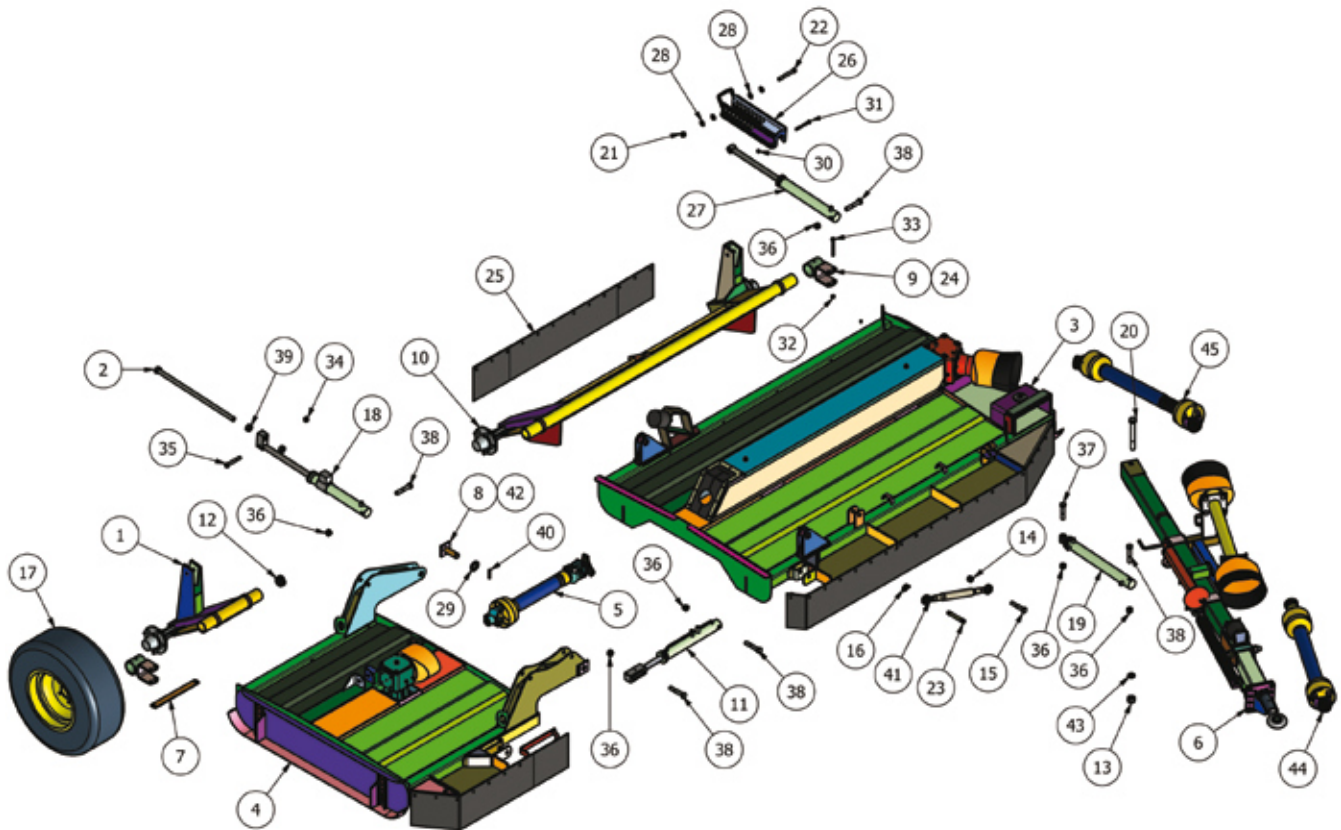
8FTGD-HD and 9FTGD-HD Hydraulics



Item	Part No	Description	Qty
1	800-900-HOSE-A	1/4"x3660mm Str to Block 90	2
2	800-900-HOSE-B	1/4"x4570mm Str to Block 90	1
3	EDOW12	1/2" DOWTY WASHER	3
4	EDOW14	1/4" DOWTY WASHER	3
5	EMM1214	1/2-14" M/M CONNECTOR	3
6	EMM14	1/4" M/M CONNECTOR	3
7	EQRM12	1/2" QUICK RELEASE MALE	3

12FTGDW-HD Grass Topper

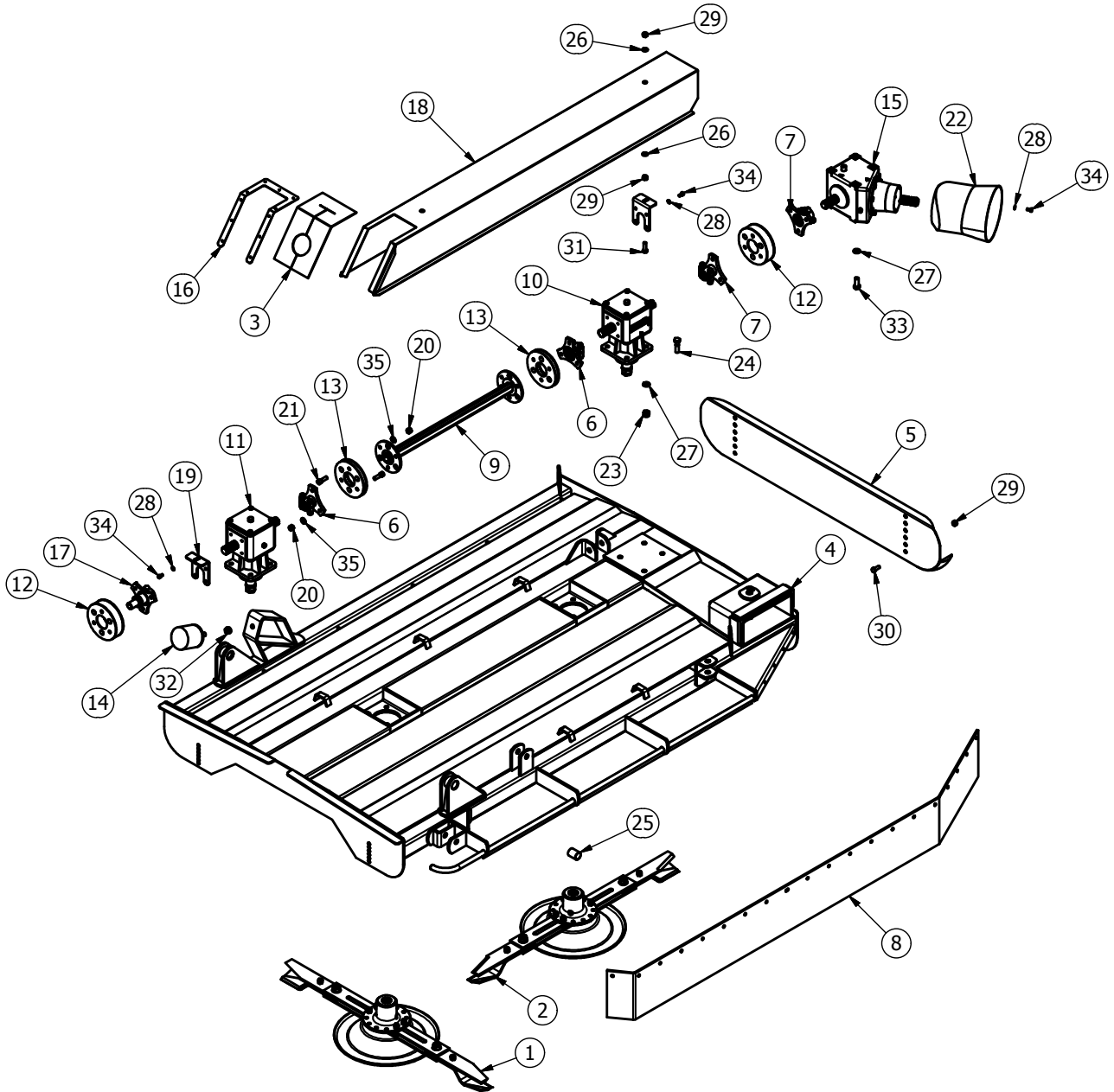
Overview



Item	Part No	Description	Qty
1	12TGTA-1	12ft WING AXLE FAB	1
2	12TGTA-TBA	1200 WING AXLE STOP	1
3	12GTGB-GA	1200T BODY ASSEMBLY	1
4	12GTGW-GA	1200T WING ASSEMBLY	1
5	12TW-PTOW	1200T WING PTO SHAFT	1
6	12TWDD-GA	1200T TRAILED DRAWBAR	1
7	12TWT-AS	AXLE STRAP (1200T)	1
8	12W-PIN07 (12GM-P1)	PIVOT PIN	2
9	8T12	AXLE CLAMP	4
10	9TGTA-1	TRAILED AXLE FAB	1
11	17GM-WR4_B	WING LIFT RAM	1
12	199269	DIA 57.5-61.5mm INSERT	4
13	1/F	1" FINE NYLOC NUT	1
14	3/4F	3/4" FINE NYLOC NUT	1
15	34x4FBZP	3/4"x4" FINE BOLT	1
16	3546	LINCH PIN DIA 9.5	1
17	10X153WH	WHEEL DIA 760x274mm	3
18	12TWT-ARAM	12TWT AXLE RAM	1
19	12TWT-DRAM	DRAWBAR RAM BODY	1
20	1x8FBZP	1"x8" FINE BOLT	1
21	5/8F	5/8" FINE NYLOC NUT	1
22	58x5FBZP	5/8"x5" FINE BOLT	1
23	S74	CAT 1 PIN DIA 19x102mm	1

24	820	GREASE NIPPLE 1/8" STR	4
25	9TSKR	900T SKIRT	1
26	9TGT-AP1	TOPPER HEIGHT SET	1
27	9TGTA-R1N	AXLE RAM BODY	1
28	DSW16	DISC SPRING 34x16.3x2.0	4
29	FW114	DIA 1 1/4" FLAT WASHER	2
30	M10	M10 NYLOC NUT	2
31	M10x110BZP	M10x110 BOLT	2
32	M12	M12 NYLOC NUT	8
33	M12x120BZP	M12x120 BOLT	8
34	M16	M16 NYLOC NUT	1
35	M16x110BZP	M16x110 BOLT	1
36	M20	M20 NYLOC NUT	6
37	M20x100BZP	M20x100 BOLT	1
38	M20x110BZP	M20x110 BOLT	5
39	M24HEX	M24 PLAIN NUT	2
40	1234	ROLL PIN DIA 10x60	2
41	S300-B	CAT 1-1 TOP LINK	1
42	849	GREASE NIPPLE M6 STR	2
43	SW1	1" SPRING WASHER	1
44	T600810ENC12RB2	T60 SHEAR BOLT O/R	1
45	V600860ENC12C12	COLLAR-COLLAR PTO	1

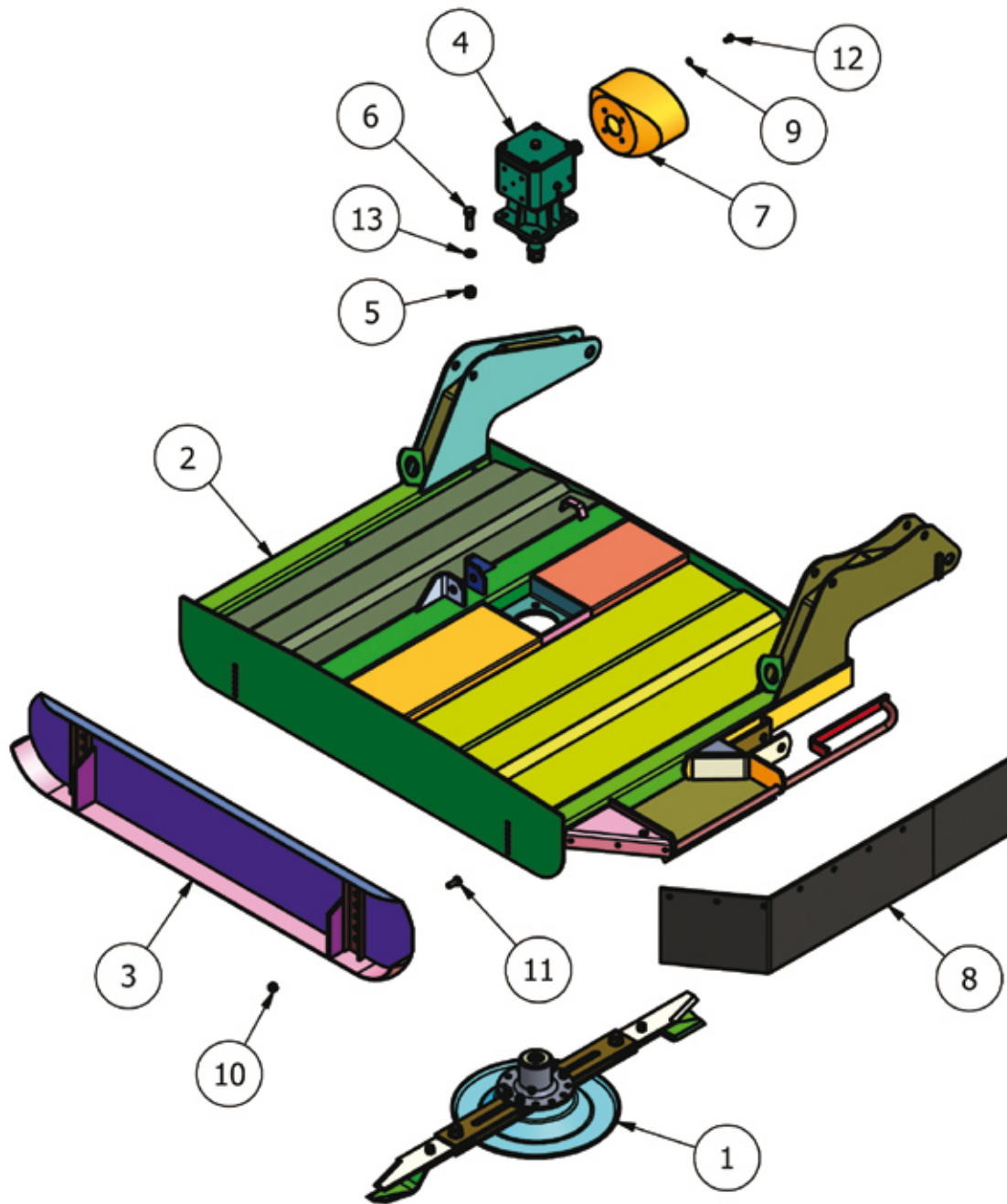
12FTGDW-HD Body Assembly



Item	Part No	Description	Qty
1	1239V2-D-BL	1239 BLADE (Anti_Clk)	1
2	1239V2-D-BR	1239 BLADE (Clk)	1
3	12GMTC1	G/BOX RUBBER COVER END	1
4	12TWTB-01	1200T BODY FAB	1
5	SLH16AS	SKID (OFFSET)	1
6	60CSD	60mm STAR DRIVE	2
7	8SM-18	6 SPLINE STAR DRIVE	2
8	8SM-30	800SM SKIRT	1
9	DRV-RC-800T	800T DRIVE	1
10	MJ40T (347801)	6 SPLINE 'T' BOX RATIO 1.47	1
11	MJ40T21 (347802)	6/21 SPLINE 'T' BOX RATIO 1.47	1
12	MJRC-113	113 PCD RUBBER COUPLING	2
13	MJRC-23	113 PCD COUPLING 4mm PLT	2
14	MOT10	DIA 100x100 BUFFER	1
15	T291005	6 SPLINE 'ANG' RATIO 1.35	1
16	12TC-E	G/BOX COVER END	1
17	12EW45-2	21 SPLINE STAR DRIVE	1

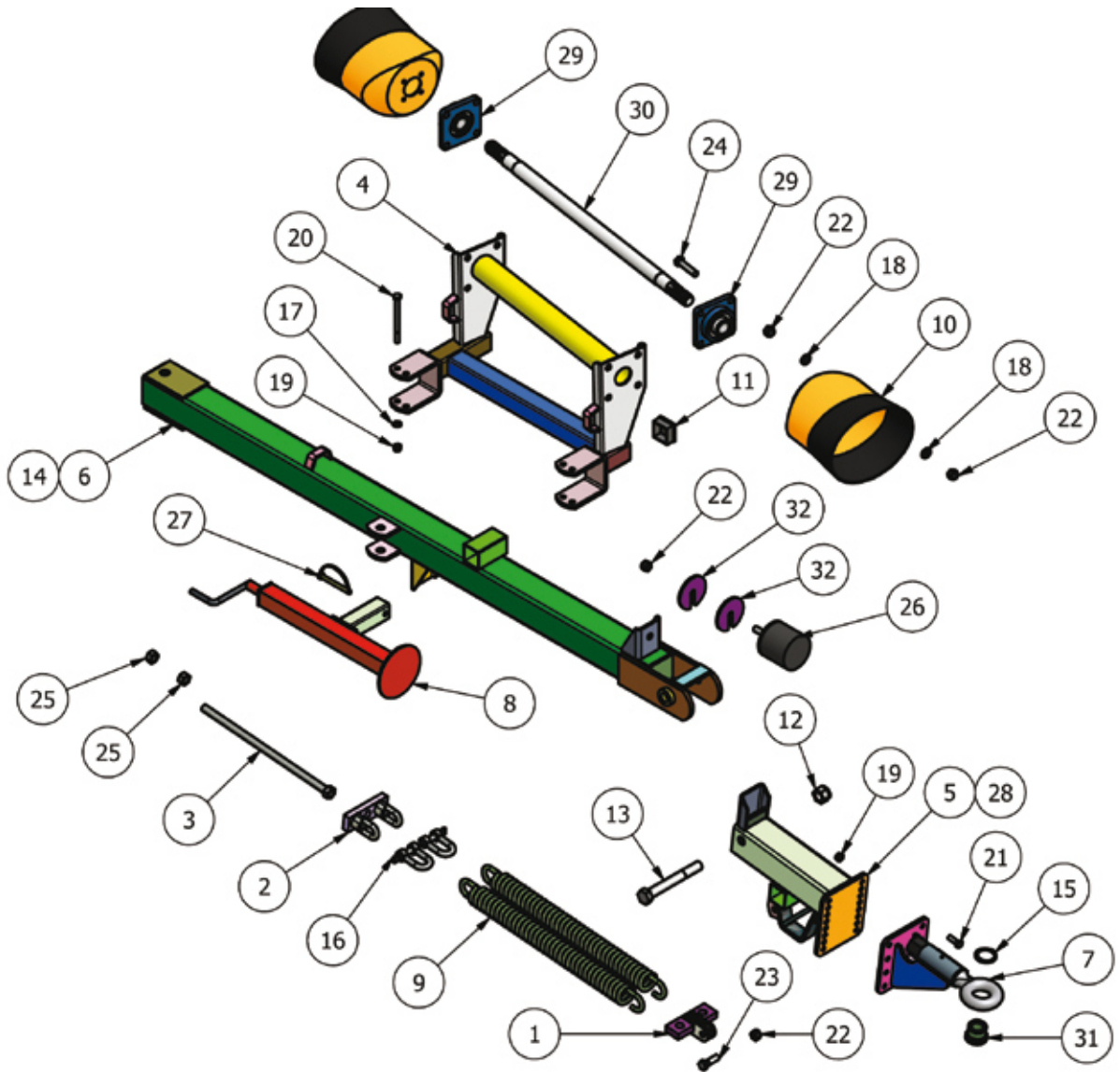
18	12TGT-TC	1200T BODY COVER	1
19	9TGT-CB	GEARBOX COVER BRKT	2
20	12HEX109	1/2F HEX 10.9	24
21	12x112FSKS	1/2"x1 1/2" FINE SOCKET HEAD 12.9	24
22	190.000.545	PTO GUARD (EXTENDED OVAL)	1
23	5/8F	5/8" FINE NYLOC NUT	8
24	58x214FBZP	5/8"x2 1/4" FINE BOLT	8
25	8SM14	DIA 1 1/4" BUSHx1 3/4"	2
26	FWM12	M12 FLAT WASHER	4
27	FWM16	M16 FLAT WASHER	12
28	FWM8	M8 FLAT WASHER	8
29	M12	M12 NYLOC NUT	8
30	M12x30SZP	M12x30 SET BOLT	4
31	M12x40SZP	M12x40 SET BOLT	2
32	M16	M16 NYLOC NUT	1
33	M16x40SZP	M16x40 SET BOLT	4
34	M8x16SZP	M8x16 SET BOLT	8
35	NL12SP	M12 SP NORDLOCK	24

12FTGDW-HD Wing Assembly



Item	Part No	Description	Qty
1	1239V2-D-BR*	1239 BLADE (Cik) (shortened blade)	1
2	12TWT-01	1200T WING FAB	1
3	SLH16AS	SKID (OFFSET)	1
4	MJ40L	6 SPLINE "L" BOX RATIO 1.47	1
5	5/8F	5/8" FINE NYLOC NUT	4
6	58x2FBZP	5/8"x2" FINE BOLT	4
7	8SM11/2	PTO GUARD (OVAL)	1
8	9TSKR	9OOT SKIRT	1
9	FWM8	M8 FLAT WASHER	4
10	M12	M12 NYLOC NUT	4
11	M12x30SZP	M12x30 SET BOLT	4
12	M8x16SZP	M8x16 SET BOLT	4
13	SW58	5/8" SPRING WASHER	4

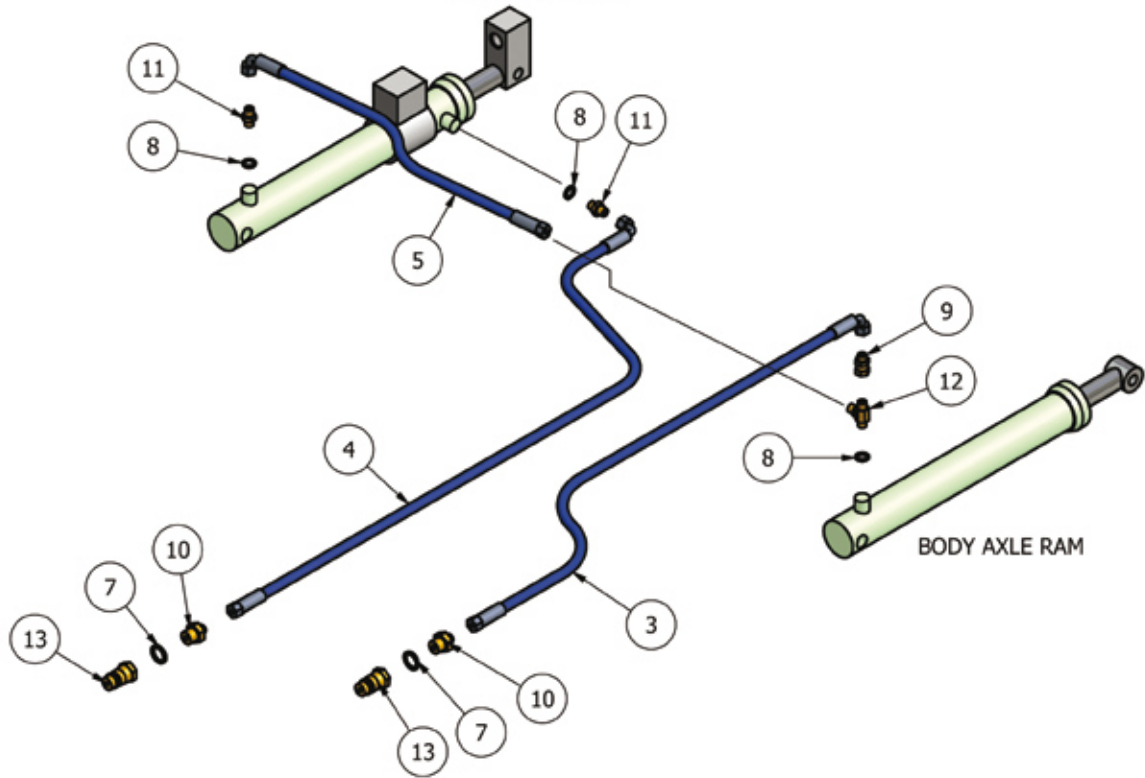
12FTGDW-HD Drawbar



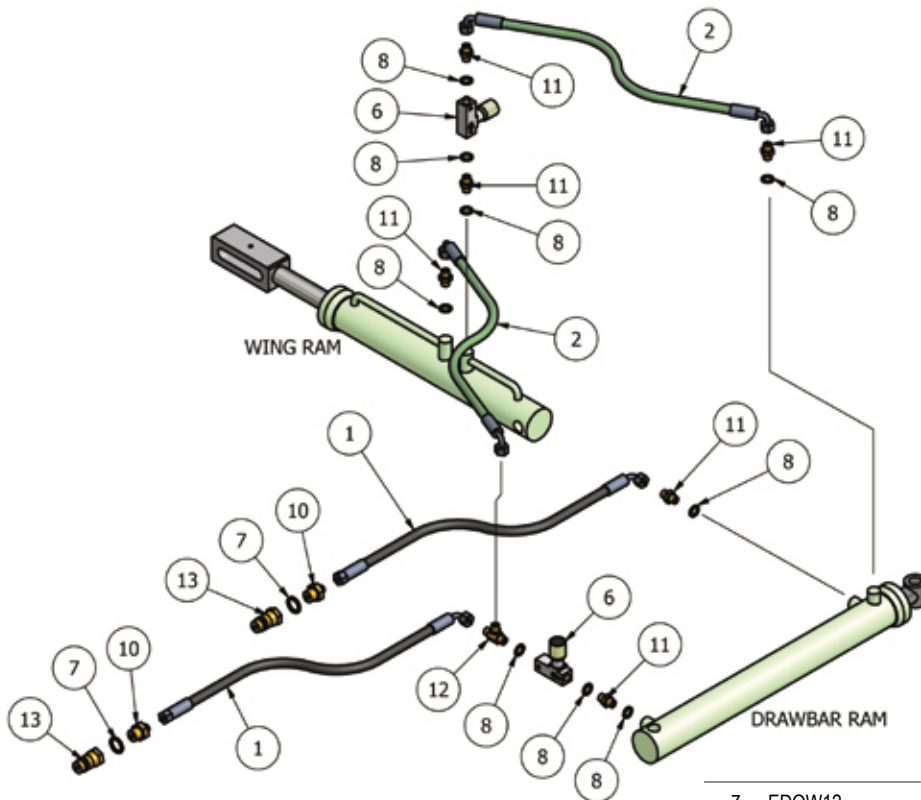
Item	Part No	Description	Qty
1	12TWTDSM	SPRING MOUNT	1
2	12TWDST	SPRING TENSIONER	1
3	12TWTDTB	1200 SPRING TENSIONER	1
4	894T	DUMMY SHAFT MOUNT	1
5	8T-AD1	DRAWBAR HINGE	1
6	8T3	DRAWBAR FAB	1
7	RTE-01	ROTARY HITCH EYE	1
8	TT-JACK	TOPPER JACK	1
9	12MB2S	DRAWBAR SPRING	2
10	190.000.545	PTO GUARD (EXTENDED OVAL)	2
11	199211	SQ 52-54mm INSERT (POL)	2
12	1F	1" FINE NYLOC NUT	1
13	1x8FBZP	1"x8" FINE BOLT	1
14	820	GREASE NIPPLE 1/8" STR	1
15	AGC2	DIA 50 EXT HEAVY CIRCLIP	1
16	EW29A	5/8" "D" SHACKLE	2

17	FWM12	M12 FLAT WASHER	4
18	FWM16	M16 FLAT WASHER	16
19	M12	M12 NYLOC NUT	12
20	M12x150BZP	M12x150 BOLT	4
21	M12x35BZP	M12x35 BOLT	8
22	M16	M16 NYLOC NUT	18
23	M16x50BZP	M16x50 BOLT	1
24	M16x70SZP	M16x70 SET BOLT	8
25	M20HEX	M20 PLAIN NUT	2
26	MOT10	DIA 105x100 BUFFER	1
27	S272	SHAFT LOCK PIN DIA 11	1
28	S840	GREASE NIPPLE 1/8"x45	1
29	SF1-12	DIA 1 1/2" FLANGE BRG	2
30	8T1-3	DUMMY SHAFT	1
31	TDD-TEB	TOE EYE BUSH	1
32	8T19	BUFFER SPACER	2

12FTGDW-HD - Axle Hydraulics



12FTGDW-HD - Wing Hydraulics



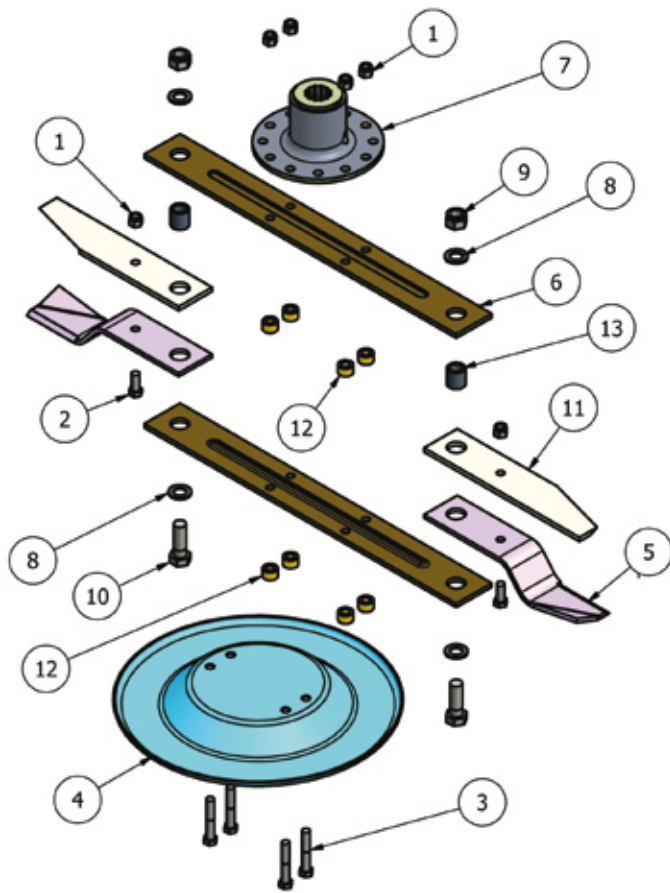
Item	Part No	Description	Qty
1	1200-HOSE-A	1/4"x3660mm Str to Block 90	2
2	1200-HOSE-B	1/4"x3400mm Block 90 to Block 90	2
3	1200-HOSE-D	1/4"x5180mm Str to Block 90	1
4	1200-HOSE-E	1/4"x8000mm Str to Block 90	1
5	1200-HOSE-F	1/4"x2900mm Str to Block 90	1
6	1251-5-14	1/4" RESTRICTOR VALVE (BLACK)	2

7	EDOW12	1/2" DOWTY WASHER	4
8	EDOW14	1/4" DOWTY WASHER	12
9	EMF14	1/4" M/F CONNECTOR	1
10	EMM1214	1/2-14" M/M CONNECTOR	4
11	EMM14	1/4" M/M CONNECTOR	8
12	EMMMT14	1/4" M/M/M CONNECTOR	2
13	EQRM12	1/2" QUICK RELEASE MALE	4

Blades

PRO-CUT BLADE SYSTEMS - from 2011

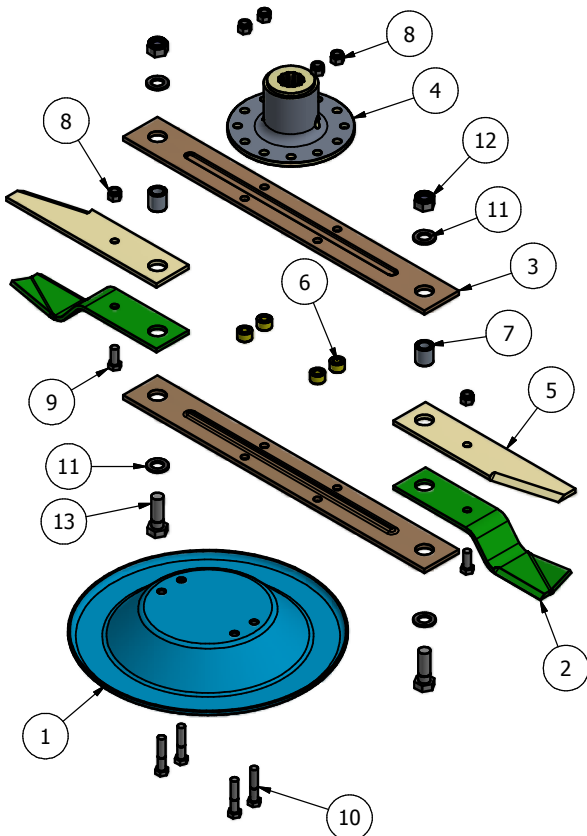
MACHINE MODEL: 8FTGD & 12FTGDW



Item	Part No	Description	Qty
1	1/2F	1/2" FINE NYLOC NUT	6
2	12x114FBZP	1/2"x1 1/4" FINE BOLT	2
3	12x3FBZP	1/2"x3" FINE BOLT	4
4	9GT-USS	UNDER SOLE SKID	1
5	9GTB/A	SWING BLADE (Anti-Clk)	2
5	9GTB/C	SWING BLADE (Clk)	2
6	BLDB-623	BLADE BACK (623 CTR)	2
7	DF-BMP	J205 G/BOX BLADE MOUNT	1
8	FWM20	M20 FLAT WASHER	4
9	M20	M20 NYLOC NUT	2
10	M20x60BZP	M20x60 BOLT	2
11	NTSB12C	OVERLAP BLADE	2
12	12T-BBS	BLADE BACK SPACER	8
13	12T-LBB	OVERLAP BLADE BUSH	2

MACHINE	QTY
8FTGD	1 clockwise 1 anti clockwise
12FTGDW	1 clockwise, 1 anti clockwise)

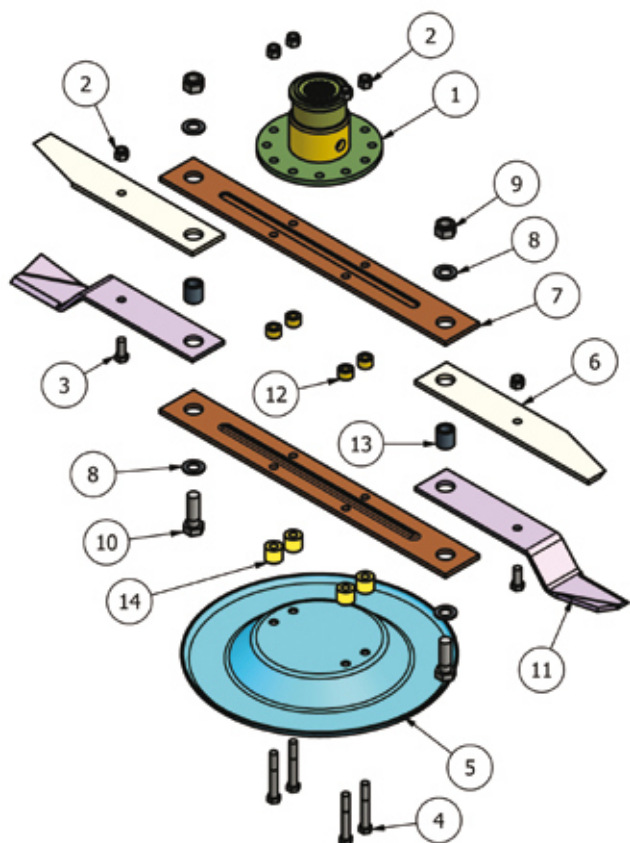
MACHINE MODEL: 12FTGDW (WING)



Item	Part No	Description	Qty
1	9GT-USS	UNDER SOLE SKID	1
2	9GTB-C	SWING BLADE (Clk)	2
3	BLDB-623	BLADE BACK (623 CTR)	2
4	DF-BMP	J205 G/BOX BLADE MOUNT	1
5	NTSB13C	OVERLAP BLADE	2
6	12T-BBS	BLADE BACK SPACER	4
7	12T-LBB	OVERLAP BLADE BUSH	2
8	1/2F	1/2" FINE NYLOC NUT	6
9	12x114FBZP	1/2"x1 1/4" FINE BOLT	2
10	12x212FBZP	1/2"x2 1/2" FINE BOLT	4
11	FWM20	M20 FLAT WASHER	4
12	M20	M20 NYLOC NUT	2
13	M20x60BZP	M20x60 BOLT	2

MACHINE	QTY
12FTGDW	1 clockwise,

MACHINE MODEL: 9FTGD



Item	Part No	Description	Qty
1	909GT-BM01	909GT BLADE MOUNT	1
2	1/2F	1/2" FINE NYLOC NUT	6
3	12x114FBZP	1/2"x1 1/4" FINE BOLT	2
4	12x312FBZP	1/2"x3 1/2" FINE BOLT	4
5	9GT-USS	UNDER SOLE SKID	1
6	BLD-OV375	OVERLAP BLADE 375mm	2
7	BLDB-595	BLADE BACK (595 CTR)	2
8	FWM20	M20 FLAT WASHER	4
9	M20	M20 NYLOC NUT	2
10	M20x60BZP	M20x60 BOLT	2
11	NTSB10A1	601 SLASHER BLADE (Anti-Clk)	2
11	NTSB10A2	601 SLASHER BLADE (Clk)	2
12	12T-BBS	BLADE BACK SPACER	4
13	12T-LBB	OVERLAP BLADE BUSH	2
14	84RM-BAM	BLADE BACK SPACER-PLATED	4

MACHINE	QTY
9FTGD	1 clockwise 1 anti clockwise

NOTE: Please have the serial number of your machine to hand when ordering blades to ensure you get the correct parts.

PTO Shafts

Machine	Primary	Secondary	Wing
8FTGD Trailed	V600860ENC12C12	T600810ENC12RB2 (T60BOOR-1100)	N/A
	V60 SHAFT COLLAR	T60 SHAFT OVERRUN+SHEARBOLT	N/A
9FTGD Trailed	V600860ENC12C12	T600810ENC12RB2 (T60BOOR-1100)	N/A
	V60 SHAFT COLLAR	T60 SHAFT OVERRUN+SHEARBOLT	N/A
12FTGDW Trailed	V600960CEC02C12	T600810ENC12RB2 (T60BOOR-1100)	12TW-PTO
	V60 SHAFT WIDE ANGLE	T60 SHAFT OVERRUN+SHEARBOLT	WING DRIVE PTO SHAFT COMPLETE 1200T

Gearboxes

Machine	Gearbox
8FTGD-HD, 9FTGD-HD & 12FTGDW-HD	MJ40T
8FTGD-HD, 9FTGD-HD & 12FTGDW-HD	T291A
12FTGDW-HD (Wing)	MJ40T21